

# HOW DID IT GET THERE?

**NOIA 2015**

---

**OCTOBER 2015**

---

**PRESENTED BY: ROBB ERICKSON**

---



# NINA



## SAFETY STATEMENT

Our people are our most valuable assets, making safety a core value. Our goal is: No Injuries No Accidents. This is embedded in our company's culture and supported through Values and Rules. All employees, including our sub-contractors, are expected to take these values and rules to heart.

### VALUES

- I AM RESPONSIBLE FOR MY OWN SAFETY
- I APPROACH OTHERS ABOUT WORKING SAFELY
- I TAKE ACTION IN CASE OF UNSAFE OPERATIONS
- IF NECESSARY, I WILL STOP THE WORK
- I ACCEPT FEEDBACK ABOUT MY SAFETY BEHAVIOUR REGARDLESS OF RANK AND POSITION
- I REPORT ALL INCIDENTS, INCLUDING NEAR-MISSES, TO INFORM OTHERS AND BUILD ON LESSONS LEARNED

### RULES

- PREPARE A RISK ASSESSMENT FOR EACH PROJECT, VESSEL OR LOCATION
- OBTAIN A PERMIT TO WORK FOR DEFINED HIGH-RISK ACTIVITIES
- MAKE A JOB HAZARD ANALYSIS FOR HAZARDOUS NON-ROUTINE ACTIVITIES
- BE INFORMED ABOUT RISK & CONTROL MEASURES
- BE FIT FOR DUTY AND WEAR THE PPE REQUIRED

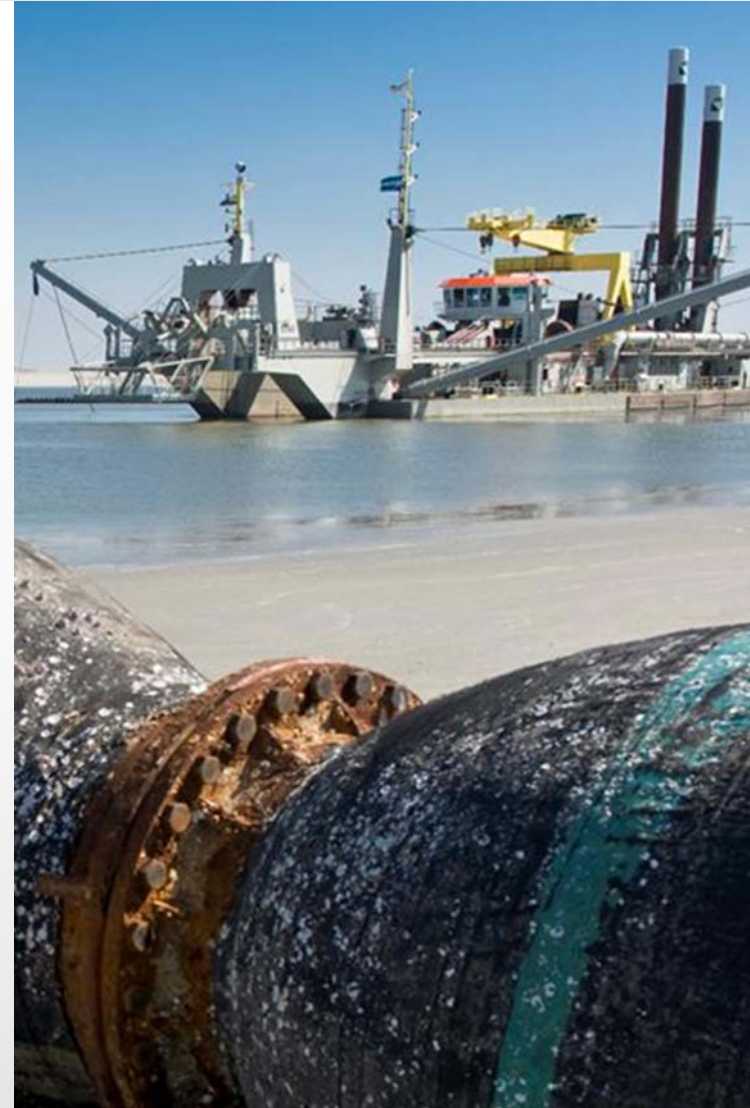


# BOSKALIS COMPANY INTRO



# EXECUTIVE SUMMARY

- Boskalis Westminster NV
- Established in 1910 as a Dutch dredging company
- Leading global dredging, marine & offshore services provider
- 11,000 employees – 1,000 vessels
- Revenue 2013: € 3.5 billion
- Listed at the NYSE Euronext, ticker BOKA market cap € 5 bln\*  
\*August 1, 2014



# GLOBAL PRESENCE



**ACTIVE IN 75 COUNTRIES  
AND 6 CONTINENTS**

● Offices  
● Projects and operations

# BOSKALIS THREE DIVISIONS

## DREDGING & INLAND INFRA

- Construction & maintenance of ports & waterways, land reclamation and coastal defense
- Civil construction, global environmental development



## OFFSHORE ENERGY

- Heavy marine transport and logistical management services
- Offshore transport & installation, decommissioning & IRM
- Subsea infrastructure



## TOWAGE & SALVAGE

- Harbor towage
- Terminal services
- Salvage operations



# OFFSHORE ENERGY FLEET



## 23 x Heavy Transport Vessels

(DWT up to 117,000T)  
Vanguard, Blue/White/Black Marlin, Mighty Servant 1&3, Transshelf, 6 T-, 4 F- & 4 S-class vessels, Super Servant 3 and HSY 278



## 2 x Multi Purpose / cable lay vessels

Ndurance (Cable lay vessel)  
Ndeavor (Multi purpose vessel)



## 2 x DP Fallpipe vessels

Rockpiper (24,000T cargo capacity)  
Seahorse (18,000T cargo capacity)



## 3 x Dive Support Vessels

(AIR, SAT systems installed)  
Constructor (SAT dive)  
SMIT Komodo, EDT Protea (AIR dive)



## 5 x Offshore support Vessels

(DP2, ROV support, AH)  
Union Manta, SMIT Kamara, SMIT Nicobar, Union Sovereign, SMIT Orca



## 22 x Ocean towage / AH tugs

(AHT 28T – 205T BP)  
Some anchor handling tugs: Union Princess, SMIT Angola, SMIT Sentosa  
Ocean towage tugs: Fairmount Sherpa, Glacier, Summit, Expedition, Alpine



## 6 x Sheerlegs

(lifting capacity up to 5,000T)  
Taklift 4, Taklift 6 and Taklift 7  
Asian Hercules, Asian Hercules II and Asian Hercules III



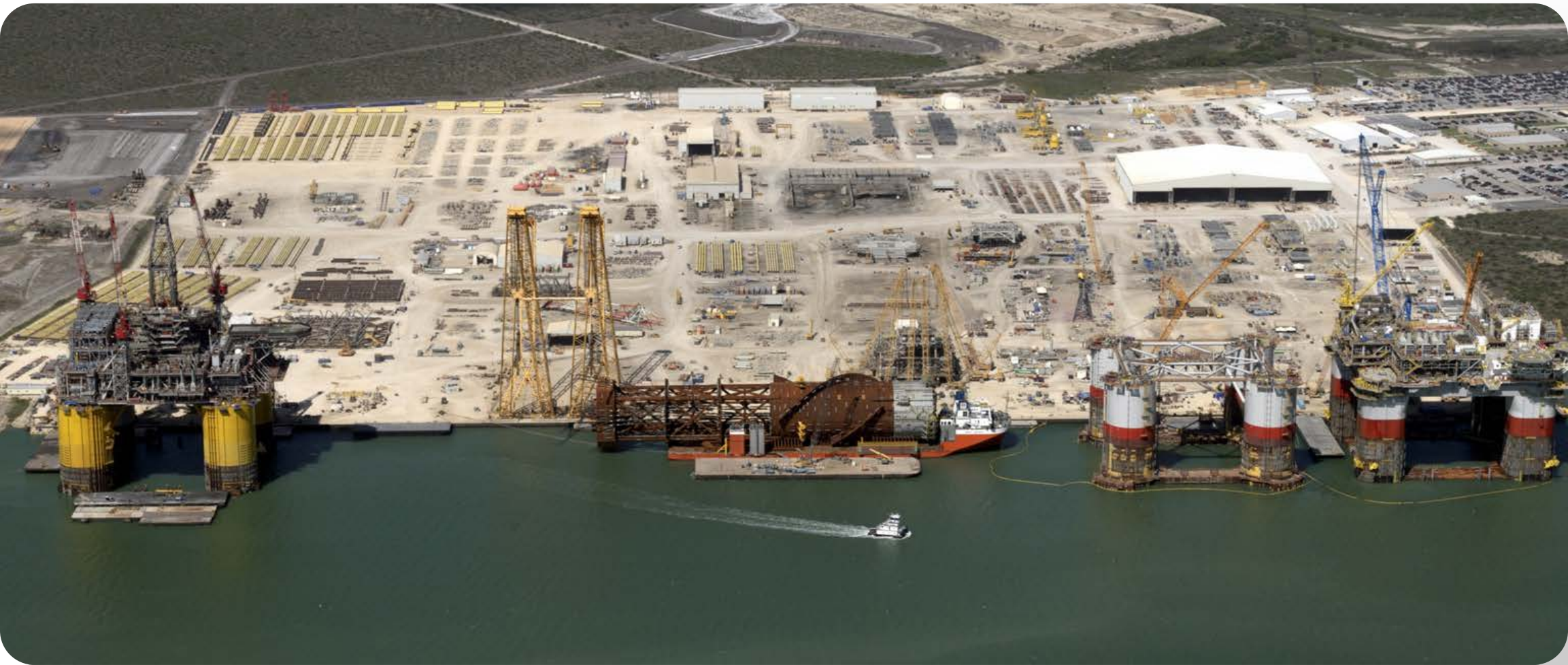
## 13 x Barges and FSP's

(DWT up to 25,000T)  
Giants (25,000T)  
SMIT barges (4,500T – 14,000T)  
Floating super pallets (5,000T)



# ENERGY NEEDS

LEFT TO RIGHT: MARS B | LUCIUS SPAR | BIG FOOT | JACK ST. MALO





CHEVRON JACK & ST. MALO  
Semi production unit hull (2013)



CHEVRON BIG FOOT  
TLP hull (2013)



ANADARKO LUCIUS  
Spar Hull (2013)



SHELL MARS B  
TLP hull (2013)

BP THUNDER HORSE  
Semi production unit (2005)



PETROSERV VICTORIA  
Semi drilling rig (2009)



SEVAN BRASIL  
Semi drilling rig (2012)



DIAMOND OFFSHORE OCEAN MONARCH  
Semi drilling rig (2009)



ROWAN RALPH COFFMAN

Jack-up drilling rig (2012)





OCEAN QUEST (2013)



ANADARKO LUCIUS  
Spar hull (2013)

# Integrated Unit 1

Keppel Fels (2014)



# DAEWOO OIL/HYUNDAI HEAVY INDUSTRIES SHWE

22,000 mT jacket transport and launch (2012)





DAEWOO OIL/HYUNDAI HEAVY INDUSTRIES SHWE  
26,000 mT topside float-over installation (2012)



# GAZFLOT MOSS CS-50

Two 19,000 mT semi drilling rig  
float-over installations (2010)





CPOC DECK

19,000 mT topside float-over (2009)

# SAPURA ACERGY SAPURA 3000

Heavy lift pipe laying vessel (2012)





VEKA  
Inland barges (2012)



DOCKWISE

CARGOTEC  
Ship to shore container cranes (2013)

# VIGOR DRYDOCK

SEPTEMBER 2014



# SEA BASED X-BAND RADAR SYSTEM

Corpus Christi via Cape Horn arriving at Pearl Harbor



# AUSTRALIAN NAVY NAVANTIA

Aircraft carrier hulls (2012/14)



# RUSSIAN NAVY VIKTOR III

Nuclear submarine (2009)



# ITS TESTING

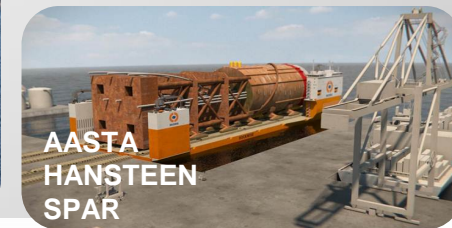
San Diego, CA





# THE DOCKWISE VANGUARD

FLAGSHIP VESSEL | WORLD'S LARGEST SEMISUBMERSIBLE HEAVY TRANSPORT VESSEL



# DOCKWISE VANGUARD EXPERIENCE

- 1<sup>ST</sup> CONTRACT:** JACK ST. MALO / CHEVRON
- 2<sup>ND</sup> CONTRACT:** NOBLE PAUL ROMANO / NOBLE DRILLING
- 3<sup>RD</sup> CONTRACT:** OCEAN QUEST / DIAMOND OFFSHORE
- 4<sup>TH</sup> CONTRACT:** INTEGRATED UNIT 1 / KEPPEL FELS
- 5<sup>TH</sup> CONTRACT:** GOLIAT FPSO / ENI
- 6<sup>TH</sup> CONTRACT:** COSTA CONCORDIA – CANCELED
- 7<sup>TH</sup> CONTRACT:** AASTA HANSTEEN / STATOIL
- 8<sup>TH</sup> CONTRACT:** 2 RIGS / NOBLE DRILLING
- 9<sup>TH</sup> CONTRACT:** FPSO ARMADA INTREPID
- 10<sup>TH</sup> CONTRACT:** DREDGING EQUIPMENT / GLDD





DOCKWISE  
VANGUARD

42M  
41M  
40M  
39M  
38M  
37M  
36M  
35M  
34M  
33M  
32M  
31M  
30M  
29M  
28M  
27M  
26M  
25M  
24M  
23M  
22M

Preparing the Dockwise Vanguard for loading the FPSO Armada Intrepid



**Preparing the Dockwise Vanguard for loading the FPSO Armada Intrepid**



***FPSO Armada Intrepid -Dockwise Vanguard  
Rotterdam to Southeast Asia 203118***

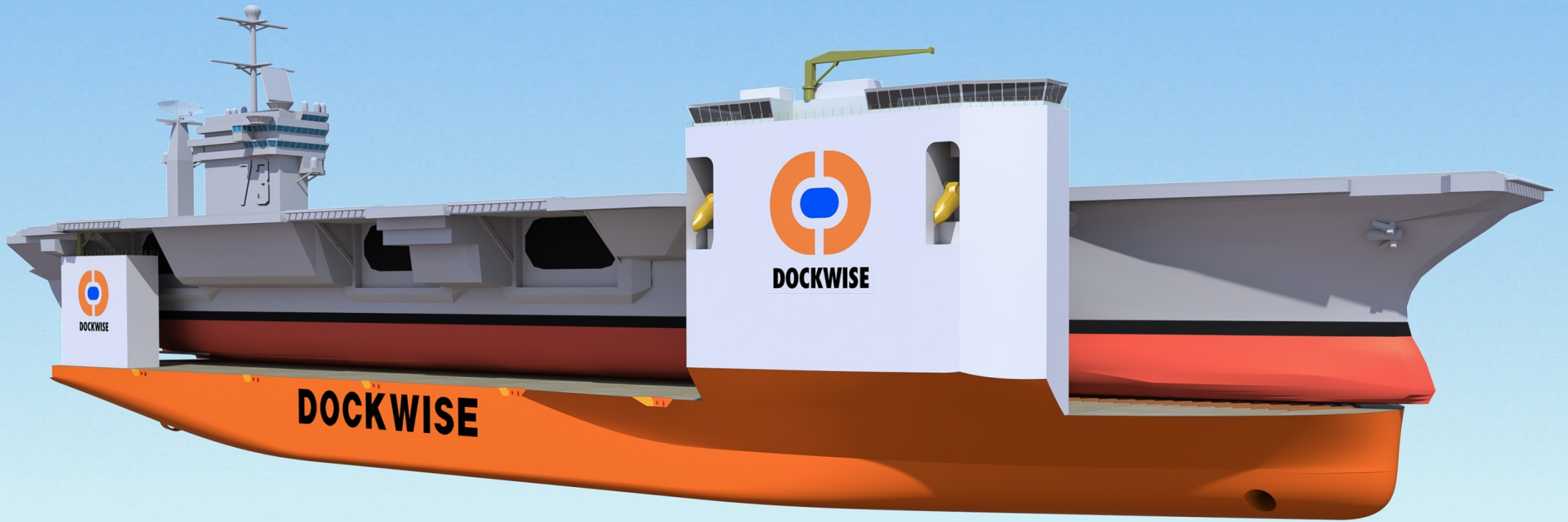
# Goliat FPSO





NOBLE DRILLING – PAUL WOLFF & MAX SMITH  
Angra dos Reis, Brazil to Singapore (2014)





# NEW HORIZONS



HOW CAN WE CREATE  
NEW HORIZONS TOGETHER?